

Foundation Stage Profile 2005

Example School

DfES 9999

26 Pupils

The following charts summarise the Foundation Stage Profile assessments for your reception children, submitted to the Assessment Unit at the end of the 2004-2005 school year. These assessments have been placed alongside comparative information (family group, LEA and national).

The figures immediately below show the percentages of children scoring 6+ on each of the scales in the Profile in your school. The Primary National Strategy has indicated that a score of 6+ on any scale of the Profile is an indicator of expected performance by the end of the Foundation Stage. This recognises that many children will not achieve all of the items in each scale, given the level of challenge incorporated in the early learning goals.

These percentages are used in the first chart below placing your school results alongside those for your family group and for Birmingham overall. Where an area of learning has more than one scale, the percentages scoring 6+ on each scale have been combined to give an overall indication for that area. Hence Personal, social and emotional development and Mathematical development each have three scales and show percentages scoring 18+, while Communication, language and literacy has four scales and shows the percentage scoring 24+.

On subsequent pages, the bar charts on the left hand side show the percentages of children in your school achieving scores for each of the Profile scales in the following ranges: 0-3, 4-5, 6-8 and 9. These appear with the equivalent information for your family group, Birmingham overall and for England as a whole in 2005. Please note that the score ranges are slightly different from those used for your 2004 assessments. This year we have used 4-5 and 6-8 rather than 4-6 and 7-8. This change reflects the Primary Strategy advice referred to in paragraph 2 above.

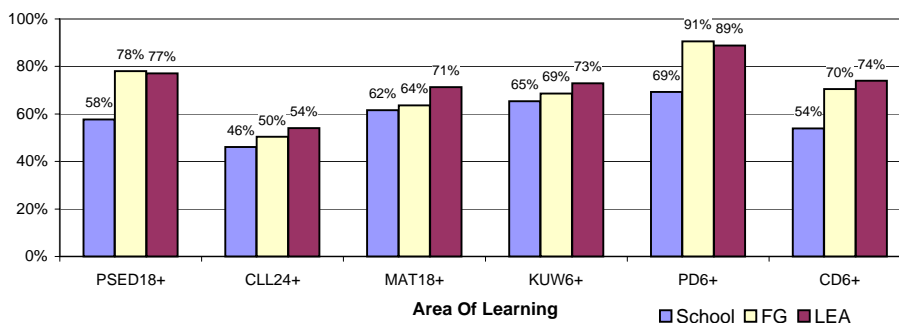
The bar charts on the right hand side of each page show the percentages of children in your school achieving each scale point in each scale, alongside Birmingham percentages for 2005. (National figures for each scale point are not published.)

While the charts on the left hand side are useful for giving an overall indication of how your children's performance on each scale compares with family group, LEA and national outcomes, the charts on the right hand side are useful for identifying strengths and weaknesses in relation to specific scale items/early learning goals. The charts on the right hand side are therefore most useful in supporting evaluation of and planning for the foundation stage curriculum in your school.

Percentages of children in your school scoring 6+ on each of the Profile scales

	% achieving 6+		% achieving 6+
Dispositions & Attitudes	62%	Language for Communication and Thinking	65%
Social Development	65%	Linking Sounds and Letters	42%
Emotional Development	65%	Reading	50%
		Writing	50%
Numbers as Labels for Counting	73%	Knowledge and Understanding of the World	65%
Calculating	65%	Physical Development	69%
Shape, Space and Measures	62%	Creative Development	54%

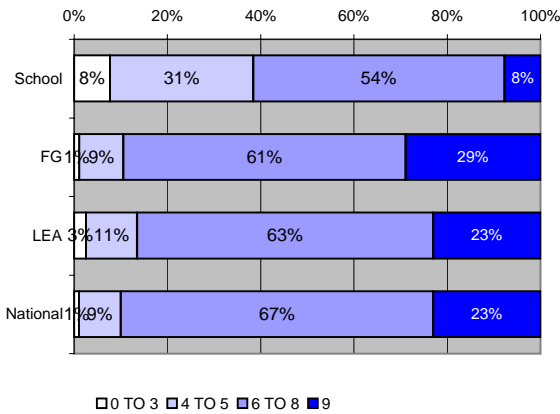
Percentages of children achieving majority of early learning goals



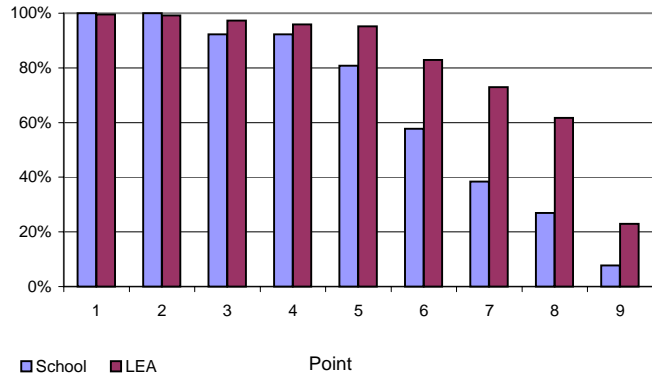
Personal, Social and Emotional Development

Dispositions and Attitudes

Percentages of children achieving various total scores

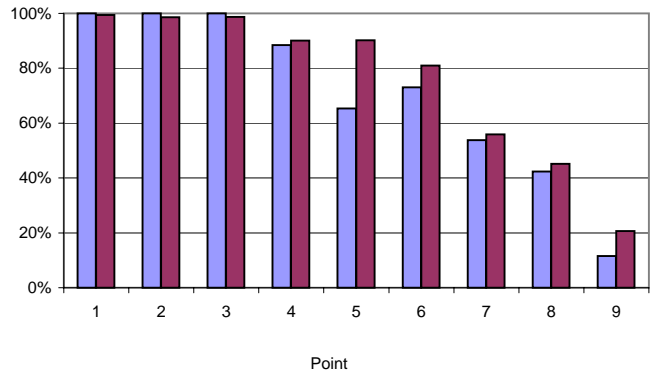
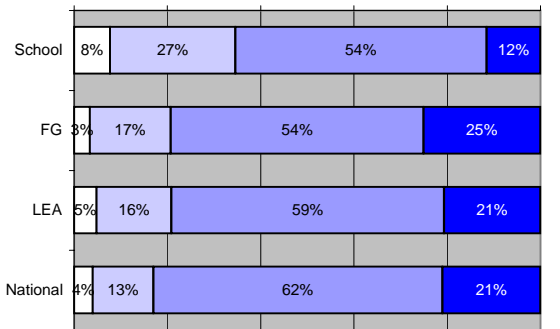


Percentages of children achieving each point in scale



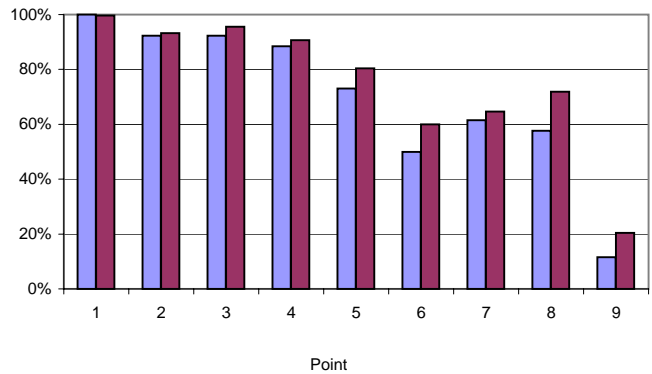
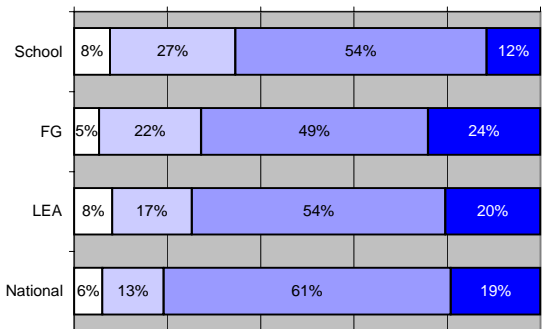
Social Development

Percentages of children achieving various total scores



Emotional Development

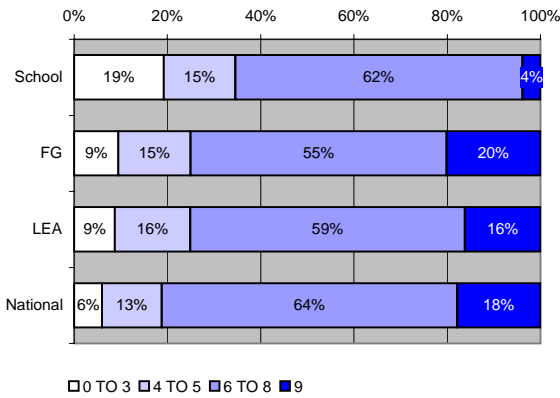
Percentages of children achieving various total scores



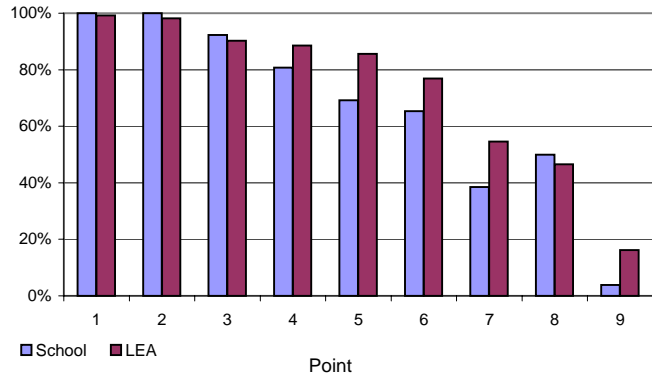
Communication, Language and Literacy

Language for Communication and Thinking

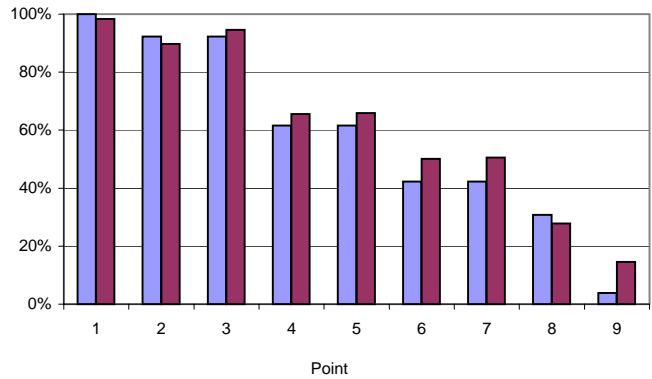
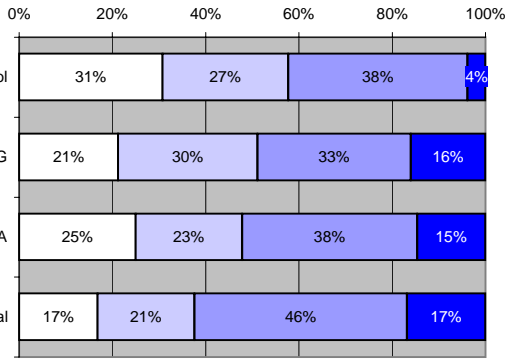
Percentages of children achieving various total scores



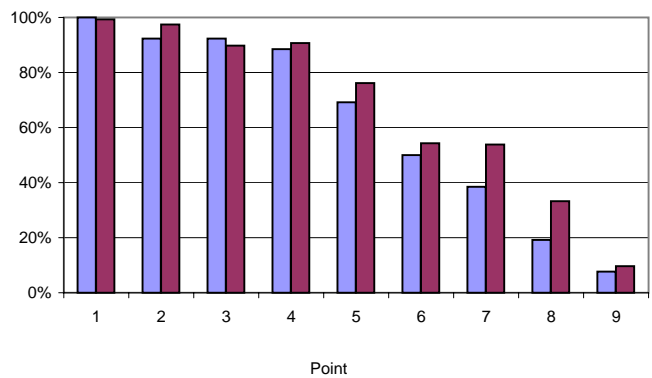
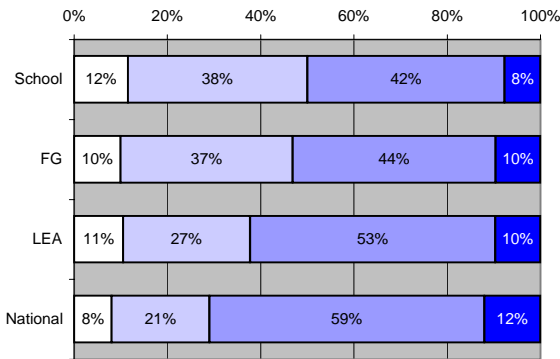
Percentages of children achieving each point in scale



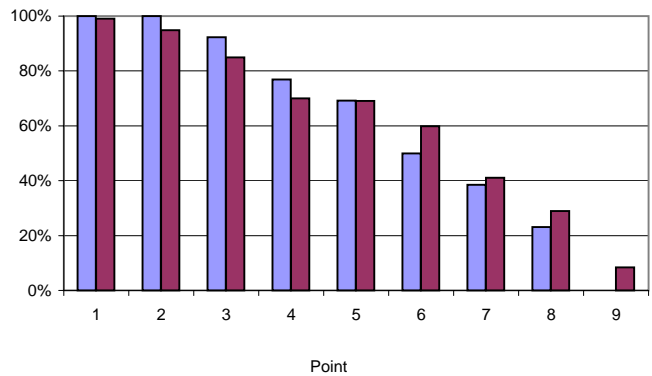
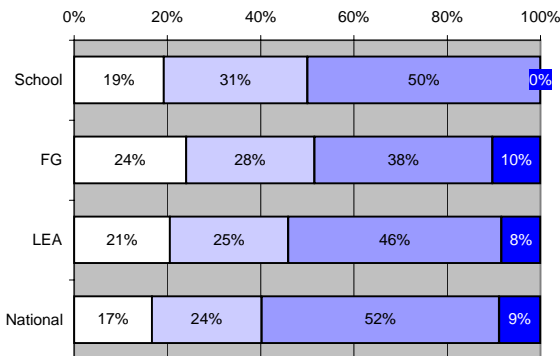
Linking Sounds and Letters



Reading



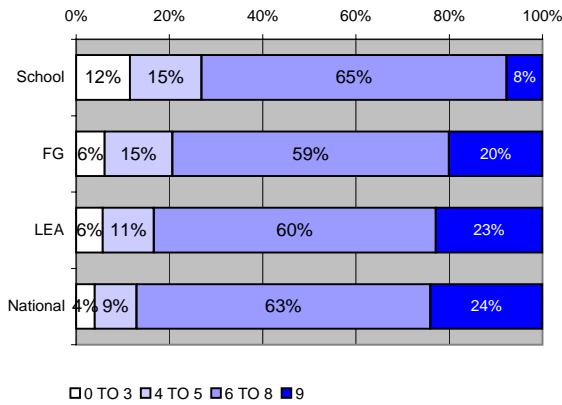
Writing



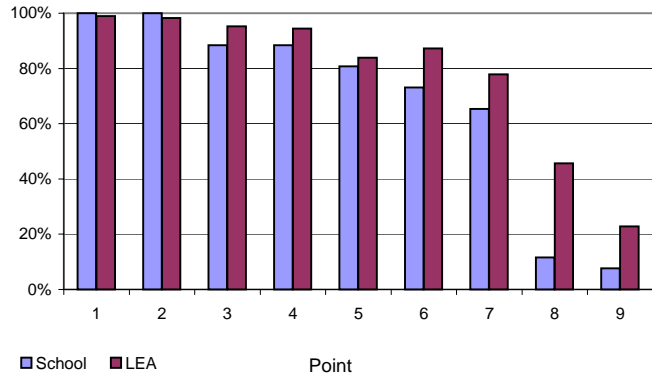
Mathematical Development

Numbers as Labels for Counting

Percentages of children achieving various total scores

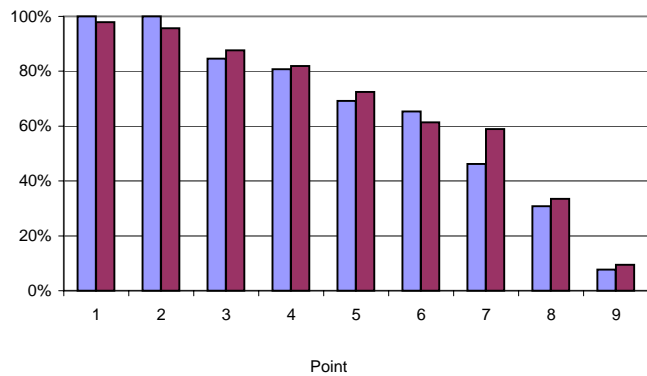
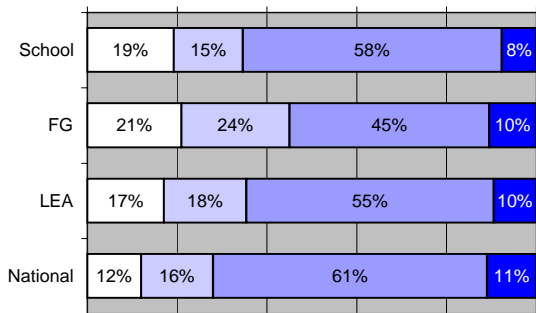


Percentages of children achieving each point in scale



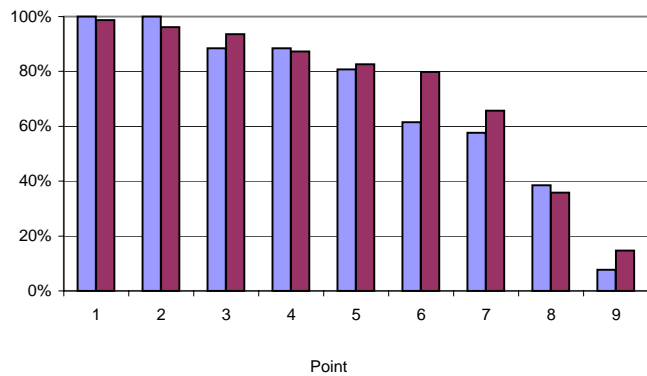
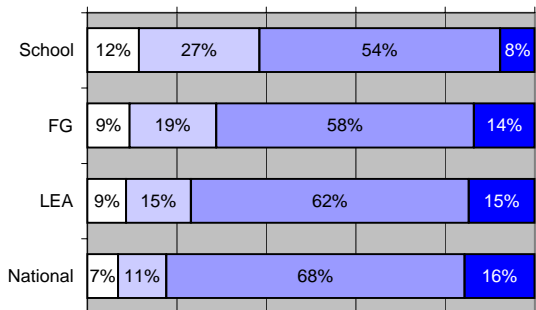
Calculating

0% 20% 40% 60% 80% 100%



Shape, Space and Measures

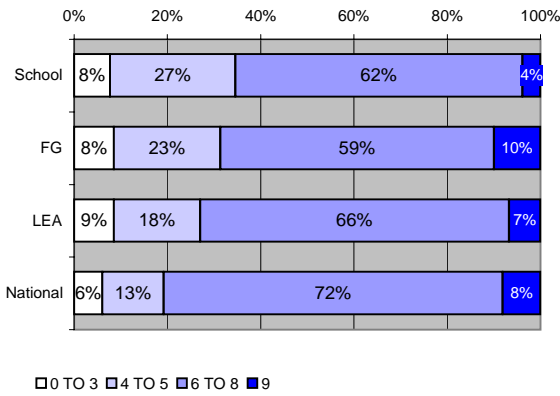
0% 20% 40% 60% 80% 100%



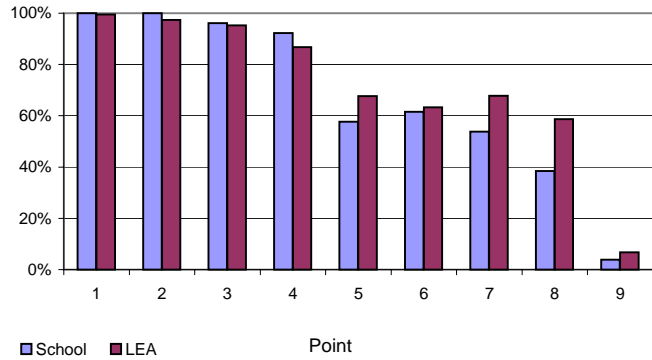
Knowledge and Understanding / Physical Development / Creative Development

Knowledge and Understanding of the World

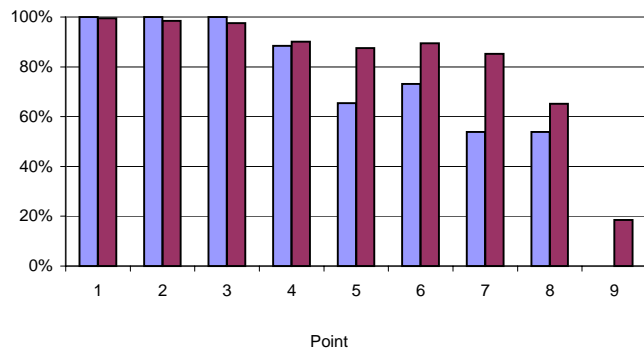
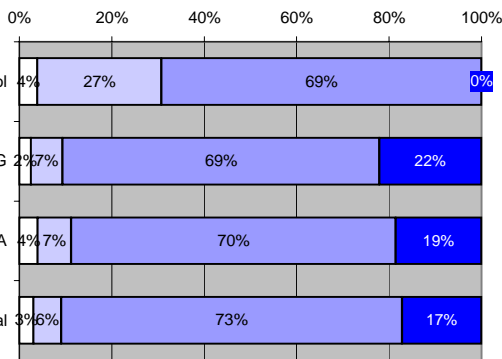
Percentages of children achieving various total scores



Percentages of children achieving each point in scale



Physical Development



Creative Development

